

ARES is one of the most versatile machines available for welding textiles with electrical impulse technology.

This technology is ideal for working with textiles such as PVC, screens, acrylics, polyesters and other fabrics. Design to weld overlaps, hem pockets, reinforcements, zippers, PVC profiles, ARES welding machine is easy to use.

It offers the operator the possibility of program, handling and modify parameters according to each type of fabric in order to achieve optimum welding results. The welding machine ARES is the perfect combination of technology, design, robustness and price.

Features:

- >Semi-automatic impulse welding machine for overlaps, hems, seams, simple weld, reinforcements, zipper, PVC profiles, etc.
- >Stoppers and guides to position the fabric according to the desired operation
- >Pneumatic stops device to automate and simplify the operation of overlap (*)
- >Pocket size: guide according to customer's needs (*)
- >Depending on the model welds up to 5 meters – 16,40 feet – in a single stroke
- >Side opening to easily move the fabric and keep welding with multiple strokes
- >Welds PVC, screen fabrics, clear PVC, black-out, etc.
- >Welds acrylics, polyester, coated fabrics and other textiles by adding the FixMatic thermal-welding tape
- >Available models: 3/4/5 meters – 9,84/ 13,12/ 16,40 feet
- >Versatile and functional machine- easy to use – low skilled operator
- >Customized guides for welding zippers, plastic profiles. etc.(*)
- >Power Regulator: ideal to weld sensitive fabrics
- >Heating and cooling time control
- >Turbo device: decreases the welding time and saves energy (*)
- >Seamless technology: invisible welding- patented by Matic (*)
- >PLC with digital display: intuitive and easy to use
- >Save up to 99 programs
- >Welding widths: 6, 10, 19 and 24 mm – 1/4", 3/8", 3/4" and 1"
- >Interchangeable electrodes (*)
- >Automatic fabric roller device (*)
- >Trays on front and back sides adapted to work with larges or heavy fabrics
- >Safety rules: complies with all the CE safety rules for the operator protection (pneumatic- electrical) – safety barriers
- >Minimal maintenance

Applications:

Welding.

Ideal solution for producing:

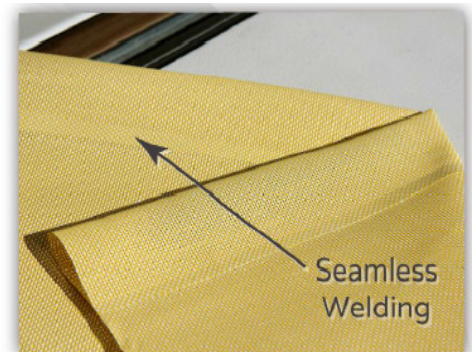
- > roller blinds
- > awnings
- > PVC and/or textile banners
- > large format prints
- > lightboxes
- > display systems, etc



Control Panel



Printed PVC: Hem



Seamless Screen: Hem

Technical Details:

TECHNICAL DATA	ARES 3000	ARES 4000	ARES 5000
Welding Length ** (m/feet)	3 meters 9,84 feet	4 meters 13,12 feet	5 meters 16,40 feet
Pocket Size ** (mm/in)	Customized according to need	Customized according to need	Customized according to need
Welding Width ** (mm/in)	6 - 10 - 19 - 24 mm 1/4" - 3/8" - 3/4" - 1"	6 - 10 - 19 - 24 mm 1/4" - 3/8" - 3/4" - 1"	6 - 10 - 19 - 24 mm 1/4" - 3/8" - 3/4" - 1"
Electrical Voltage (EU/US)	EU: 230 V F+N 50 Hz AC US: 230 V F+F 60Hz AC	EU: 230 V F+N 50 Hz AC US: 230 V F+F 60Hz AC	EU: 400 V 3F+N 50 Hz AC US: 230 V 3F 60Hz AC
Electrical Power	4 kW	5 kW	6,5 kW
Air Pressure	6 bar	6 bar	6 bar

* Optional

** Precise measures are calculated with metric system – Imperial value is only to be used as a reference

Disclaimer: The information supplied in this technical sheet is for guidance only and should not be construed as warranty of any kind. This document is not legal binding and is based on average results from current production. Unless otherwise stated, values cannot be considered as minimum to be satisfied. Purchaser is fully responsible for determining the product suitability for its intended application. Technical details are subject to change without prior notice. Please contact *Media One Digital Imaging Solutions, LLC* for any additional information you may require.